



# WINGS

**OVERVIEW**

MY26

# WINGS

OVERVIEW  
MY26



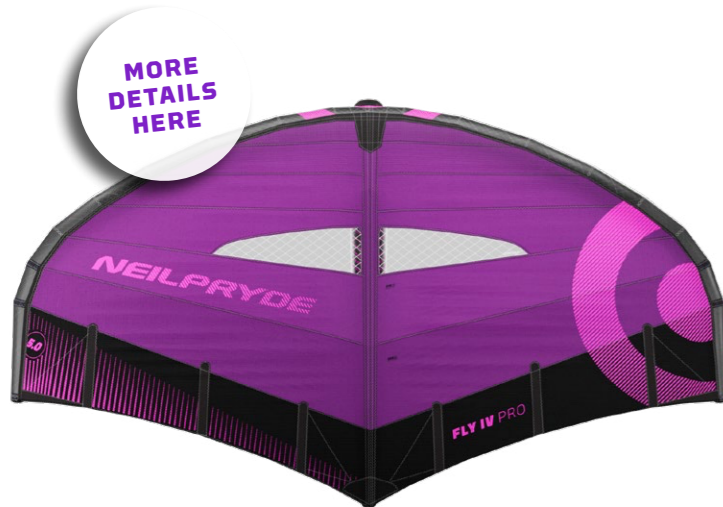
THE NEW  
FLY IV  
PRO

THE NEW  
FLY IV



THE NEW  
FIREFLY

THE NEW  
FIREFLY  
PRO SL



THE NEW  
FIREFLY  
PRO



# WINGS

## OVERVIEW MY26

THE HIGHLIGHTS OF THE REDESIGNED  
WING COLLECTION IN 2026



### THE NEW FLY IV PRO

UNLEASH PRECISION  
Upwind & Downwind Performance

#### HIGHLIGHTS

- » new LE geometry that increases stiffness in the center section without increasing diameter
- » deep refinements in both the shape and the spanwise lift distribution
- » reduced wingspan (aspect ratio) especially in the larger sizes
- » increased skin tension in the leading edge sections to maximally leverage the stiffness of the LE
- » the new Fly IV Pro points higher, is faster upwind, and is capable of a whole new level of reaching/downwind performance due to improved control and more direct feel

C1 Purple/Pink

SIZE	EST. SPAN (mm)	EST. STRUT (mm)*	EST. AR	WEIGHT (kg)	PRESSURE LE (PSI)	PRESSURE STRUT (PSI)
3,5	2965	1660	2,51	2,00	9,0	9,5
4,0	3140	1780	2,46	2,10	9,0	9,5
4,5	3300	1900	2,42	2,20	8,5	9,0
5,0	3445	2018	2,37	2,45	8,5	9,0
5,5	3565	2130	2,31	2,55	8,0	8,5
6,0	3690	2230	2,27	2,65	8,0	8,5
6,5	3800	2340	2,22	2,85	7,5	8,0



### THE NEW FLY IV

HIGH PERFORMANCE FLIGHT  
Faster & more direct

#### HIGHLIGHTS

- » completely re-engineered wing, designed with racing in mind
- » reaches a new level of upwind and downwind performance
- » now also equipped with the NeilPryde Mono Handle
- » global construction redesign similar to the Fly IV Pro

C2 Purple/Orange | C4 Berry/Pink

SIZE	EST. SPAN (mm)	EST. STRUT (mm)*	EST. AR	WEIGHT (kg)	PRESSURE LE (PSI)	PRESSURE STRUT (PSI)
3,5	1660	1660	2,51	2,20	8,5	9,0
4,0	1780	1780	2,46	2,40	8,5	9,0
4,5	1900	1900	2,42	2,55	8,0	8,5
5,0	2018	2018	2,37	2,65	8,0	8,5
5,5	2130	2130	2,31	2,85	7,5	8,0
6,0	2230	2230	2,27	2,95	7,5	8,0
6,5	2340	2340	2,22	3,15	7,0	7,5



### THE NEW FIREFLY PRO

PUSH BEYOND LIMITS  
Pro-level Freestyle / Freeride

#### HIGHLIGHTS

- » multi test winner in 2025, development mostly restricted to small but powerful tune ups
- » addition of a transition segment on the strut behind the handle to increase stiffness in the back section
- » refined construction of the AeroTex Leading Edge and Middle Strut
- » new AeroTex Light in the wing tips (10% lighter than our black AeroTex) for perfect balanced weight & stiffness ratio

C1 Purple/Pink | C3 White

SIZE	EST. SPAN (mm)	EST. STRUT (mm)*	EST. AR	WEIGHT (kg)	PRESSURE LE (PSI)	PRESSURE STRUT (PSI)
3,0	2675	1532	2,39	1,90	9,0	9,5
3,5	2865	1658	2,35	2,10	8,5	9,0
4,0	3040	1780	2,31	2,25	8,5	9,0
4,5	3205	1898	2,28	2,40	8,0	8,5
5,0	3358	2014	2,26	2,50	8,0	8,5
5,5	3500	2128	2,23	2,65	7,5	8,0
6,0	3634	2240	2,20	2,80	7,5	8,0



### THE NEW FIREFLY

WHEREAS FREESTYLE TAKES FLIGHT  
Freewave

#### HIGHLIGHTS

- » ultimate go-to freeride wing, blending balanced handling, smooth power delivery, and everyday durability
- » addition of a transition segment on the strut behind the handle to increase stiffness in the back section
- » acceleration and pumping has been slightly improved due to the new strut

C2 Purple/Orange | C3 White | C4 Berry/Pink

SIZE	EST. SPAN (mm)	EST. STRUT (mm)*	EST. AR	WEIGHT (kg)	PRESSURE LE (PSI)	PRESSURE STRUT (PSI)
2,0	2230	1250	2,49	1,70	10,5	11,0
2,5	2465	1396	2,43	1,80	10,0	10,5
3,0	2675	1532	2,39	2,00	9,5	10,0
3,5	2865	1658	2,35	2,15	9,0	9,5
4,0	3040	1780	2,31	2,30	9,0	9,5
4,5	3205	1898	2,28	2,50	8,5	9,0
5,0	3358	2014	2,26	2,65	8,5	9,0
5,5	3500	2128	2,23	2,80	8,0	8,5
6,0	3634	2240	2,20	2,95	8,0	8,5



### THE NEW FIREFLY PRO SL

MASTER THE SUPER LIGHTWIND  
Light Wind Performance

#### HIGHLIGHTS

- » the light weight weapon for light wind
- » comes with a Duo Handle system to support an easy take off with bigger scaled wings
- » lightest weight due to the proven material combination (AeroTex, 5x5 & 6x6 Ripstop Canopy, Carbon Handles) and refined construction of the FireFly Pro range

C3 White

SIZE	EST. SPAN (mm)	EST. STRUT (mm)*	EST. AR	WEIGHT (kg)	PRESSURE LE (PSI)	PRESSURE STRUT (PSI)
6,5	3760	2350	2,18	3,20	7,0	7,5
7,0	3880	2460	2,16	3,30	7,0	7,5
7,5	3980	2560	2,16	3,50	6,5	7,0

# WINGS

## OVERVIEW MY26

THE HIGHLIGHTS OF THE REDESIGNED  
WING COLLECTION IN 2026



### THE NEW FLY IV PRO

UNLEASH PRECISION  
Upwind & Downwind Performance

#### HIGHLIGHTS

- » new LE geometry that increases stiffness in the center section without increasing diameter
- » deep refinements in both the shape and the spanwise lift distribution
- » reduced wingspan (aspect ratio) especially in the larger sizes
- » increased skin tension in the leading edge sections to maximally leverage the stiffness of the LE
- » the new Fly IV Pro points higher, is faster upwind, and is capable of a whole new level of reaching/downwind performance due to improved control and more direct feel

C1 Purple/Pink

SIZE	CARBON HANDLE LENGTH (mm)	BAG	REC. LEASH LENGTH (cm)
3,5	930 Mono Handle	Tubular Bag S	1000
4,0	990 Mono Handle	Tubular Bag M	1000
4,5	990 Mono Handle	Tubular Bag M	1200
5,0	990 Mono Handle	Tubular Bag M	1200
5,5	1070 Mono Handle	Tubular Bag L	1200
6,0	1070 Mono Handle	Tubular Bag L	1400
6,5	1070 Mono Handle	Tubular Bag L	1400



### THE NEW FLY IV

HIGH PERFORMANCE FLIGHT  
Faster & more direct

#### HIGHLIGHTS

- » completely re-engineered wing, designed with performance-freeride in mind
- » reaches a new level of upwind and downwind performance
- » now also equipped with the NeilPryde Mono Handle
- » global construction redesign similar to the Fly IV Pro

C2 Purple/Orange | C4 Berry/Pink

SIZE	CARBON HANDLE LENGTH (mm)	BAG	REC. LEASH LENGTH (cm)
3,5	930 Mono Handle	Tubular Bag S	1000
4,0	990 Mono Handle	Tubular Bag M	1000
4,5	990 Mono Handle	Tubular Bag M	1200
5,0	990 Mono Handle	Tubular Bag M	1200
5,5	1070 Mono Handle	Tubular Bag M	1200
6,0	1070 Mono Handle	Tubular Bag L	1400
6,5	1070 Mono Handle	Tubular Bag L	1400



### THE NEW FIREFLY PRO

PUSH BEYOND LIMITS  
Pro-level Freestyle / Freeride

#### HIGHLIGHTS

- » multi test winner in 2025, development mostly restricted to small but powerful tune ups
- » addition of a transition segment on the strut behind the handle to increase stiffness in the back section
- » refined construction of the AeroTex Leading Edge and Middle Strut
- » new AeroTex Light in the wing tips (10% lighter than our black AeroTex) for perfect balanced weight & stiffness ratio

C1 Purple/Pink | C3 White

SIZE	CARBON HANDLE LENGTH (mm)	BAG	REC. LEASH LENGTH (cm)
3,0	930 Mono Handle	Tubular Bag S	1000
3,5	930 Mono Handle	Tubular Bag S	1000
4,0	990 Mono Handle	Tubular Bag M	1200
4,5	990 Mono Handle	Tubular Bag M	1200
5,0	990 Mono Handle	Tubular Bag M	1200
5,5	1070 Mono Handle	Tubular Bag L	1400
6,0	1070 Mono Handle	Tubular Bag L	1400



### THE NEW FIREFLY

WHEREAS FREESTYLE TAKES FLIGHT  
Freewave

#### HIGHLIGHTS

- » ultimate go-to freeride wing, blending balanced handling, smooth power delivery, and everyday durability
- » addition of a transition segment on the strut behind the handle to increase stiffness in the back section
- » acceleration and pumping has been slightly improved due to the new strut

C2 Purple/Orange | C3 White | C4 Berry/Pink

SIZE	CARBON HANDLE LENGTH (mm)	BAG	REC. LEASH LENGTH (cm)
2,0	780 Mono Handle	Tubular Bag XS	1000
2,5	780 Mono Handle	Tubular Bag XS	1000
3,0	930 Mono Handle	Tubular Bag S	1000
3,5	930 Mono Handle	Tubular Bag S	1000
4,0	990 Mono Handle	Tubular Bag M	1000
4,5	990 Mono Handle	Tubular Bag M	1200
5,0	990 Mono Handle	Tubular Bag M	1200
5,5	1070 Mono Handle	Tubular Bag L	1400
6,0	1070 Mono Handle	Tubular Bag L	1400



### THE NEW FIREFLY PRO SL

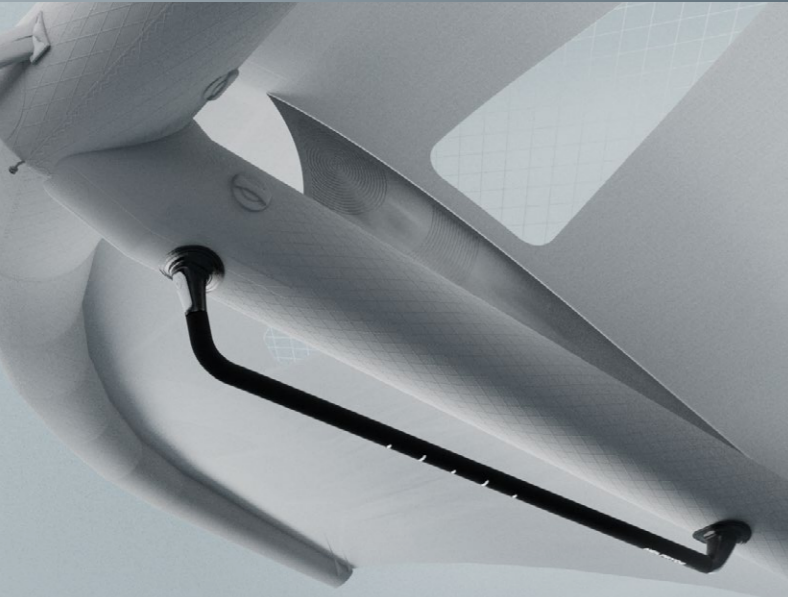
MASTER THE SUPER LIGHTWIND  
Light Wind Performance

#### HIGHLIGHTS

- » the light weight weapon for light wind
- » comes with a Duo Handle system to support an easy take off with bigger scaled wings
- » lightest weight due to the proven material combination (AeroTex, 5x5 & 6x6 Ripstop Canopy, Carbon Handles) and refined construction of the FireFly Pro range

C3 White

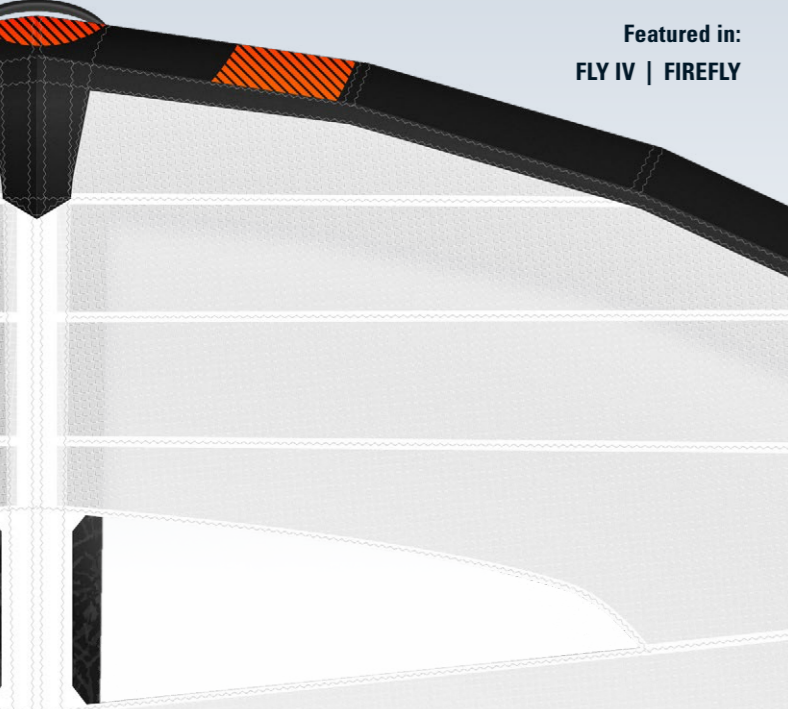
SIZE	CARBON HANDLE LENGTH (mm)	BAG	REC. LEASH LENGTH (cm)
6,5	780 + 380 Duo Handle	Backpack XL	1400
7,0	780 + 380 Duo Handle	Backpack XL	1400
7,5	780 + 380 Duo Handle	Backpack XL	1400



CARBON MONO HANDLE

Combining ultra-lightweight design with a sleek, streamlined grip. This handle offers enhanced control and precision, perfectly complementing the wing’s high-performance capabilities while delivering a clean, modern aesthetic.

Featured in:  
FLY IV PRO | FLY IV | FIREFLY PRO | FIREFLY | FIREFLY PRO SL



PVC WINDOWS

Fly IV and FireFly feature PVC for maximum visibility and durability. Carefully integrated into the panel layout, the PVC panels deliver unmatched visibility and durability, letting you stay aware of your surroundings while pushing your limits on the water.

Featured in:  
FLY IV | FIREFLY



**5X5**  
NANO COATED  
68G RIPSTOP CANOPY

**6X6**  
NANO COATED  
76G RIPSTOP CANOPY



**HD POLY X-PLY**  
1.5M RIPSTOP WINDOW

HD POLY X-PLY RIPSTOP WINDOWS

The Pro models feature an ultralight X-Ply Ripstop. Integration into the panel layout ensures a perfect balance of visibility, lightweight construction and structural integrity, allowing you to keep your focus on the ride.

Featured in:  
FLY IV PRO | FIREFLY PRO | FIREFLY PRO SL



AEROTEX

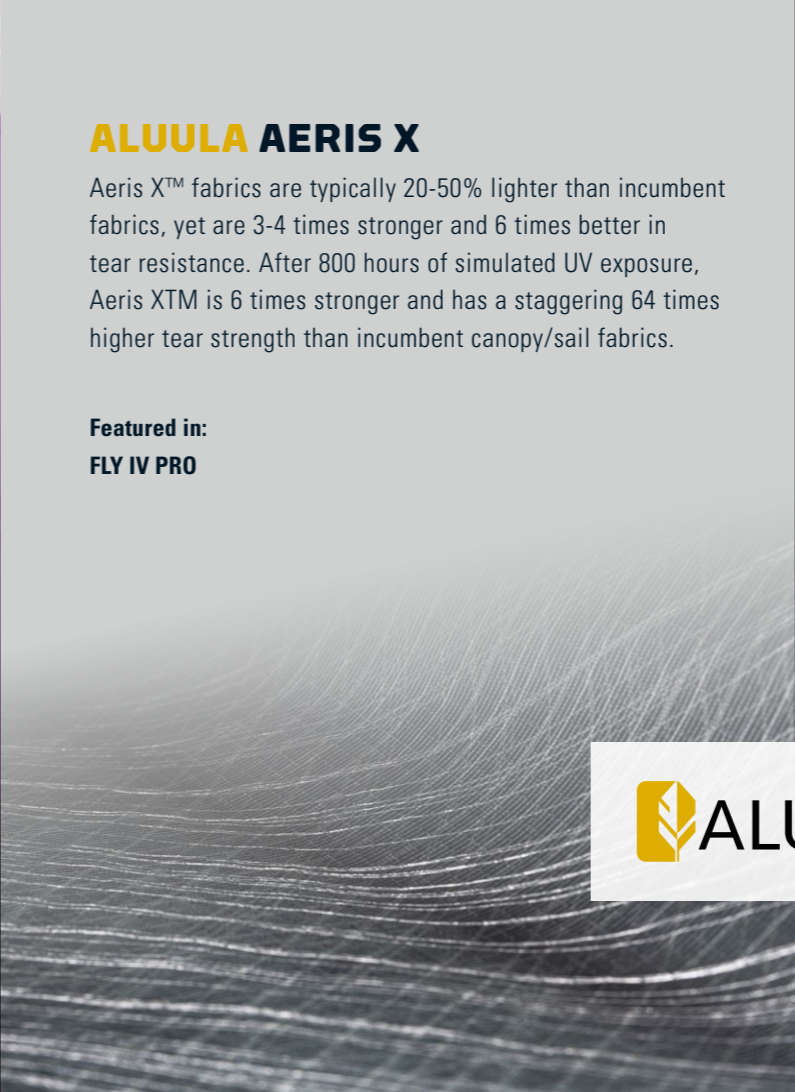
The central material of the FireFly PRO leading edge features our latest pro-level construction material, AeroTex. This high-tech composite is composed of woven UHMWPE (Ultra High Molecular Weight Polyethylene) with a black finish, enhanced with a protective film on one side and reinforced with Aramid X-Ply in the core. This combination offers exceptional strength, durability, and resistance to wear while maintaining a lightweight profile, perfect for demanding conditions and allowing us to reduce leading edge diameter while increasing stiffness.

NEW AEROTEX LIGHT

Used in selected areas of the wing such as the wingtips, AeroTex Light is the latest evolution of our high-performance material concept. This new white version features a slightly modified X-Ply structure with wider spacing, resulting in a material that is approximately 10% lighter than the standard black AeroTex (73 gsm vs. 82 gsm). Despite its reduced weight, AeroTex Light retains excellent strength, stability, and responsiveness—ideal for minimizing swing weight and enhancing handling in the most sensitive parts of the wing.



Featured in:  
FIREFLY PRO | FIREFLY PRO SL



ALUULA AERIS X

Aeris X™ fabrics are typically 20-50% lighter than incumbent fabrics, yet are 3-4 times stronger and 6 times better in tear resistance. After 800 hours of simulated UV exposure, Aeris X™ is 6 times stronger and has a staggering 64 times higher tear strength than incumbent canopy/sail fabrics.

Featured in:  
FLY IV PRO



ALUULA AERIS

Built using the same ALUULA Fuse™ process as the more structural fabrics, the ALUULA Aeris™ family combines the unmatched strength performance of the ALUULA Core™ along with the toughest and strongest ultralight films available, resulting in a softer hand feel but unrivaled strength, tear and abrasion characteristics.

Featured in:  
FLY IV PRO





INTEGRATED BATTEN DESIGN

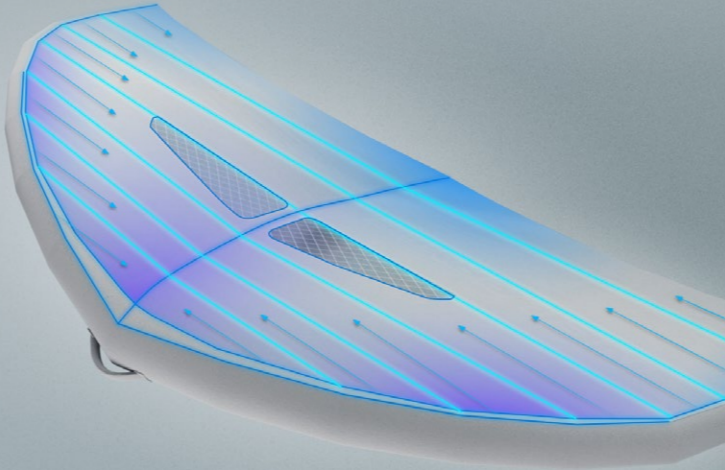
Sewn-in composite battens create a flat, fast trailing edge with minimum flutter.

Featured in:  
FLY IV PRO | FLY IV | FIREFLY PRO | FIREFLY | FIREFLY PRO SL

HIGH TENSION CANOPY

The 3D shape of the canopy leading edge is defined by a series of transverse panels that converge at the wingtips. This leverages the LE Tube structure to maximize tension in the critical entry sections – the result is more lift and a higher stall angle for better acceleration in light winds, and the ability to fly efficiently at low angles of attack for better control and higher top speeds in strong winds.

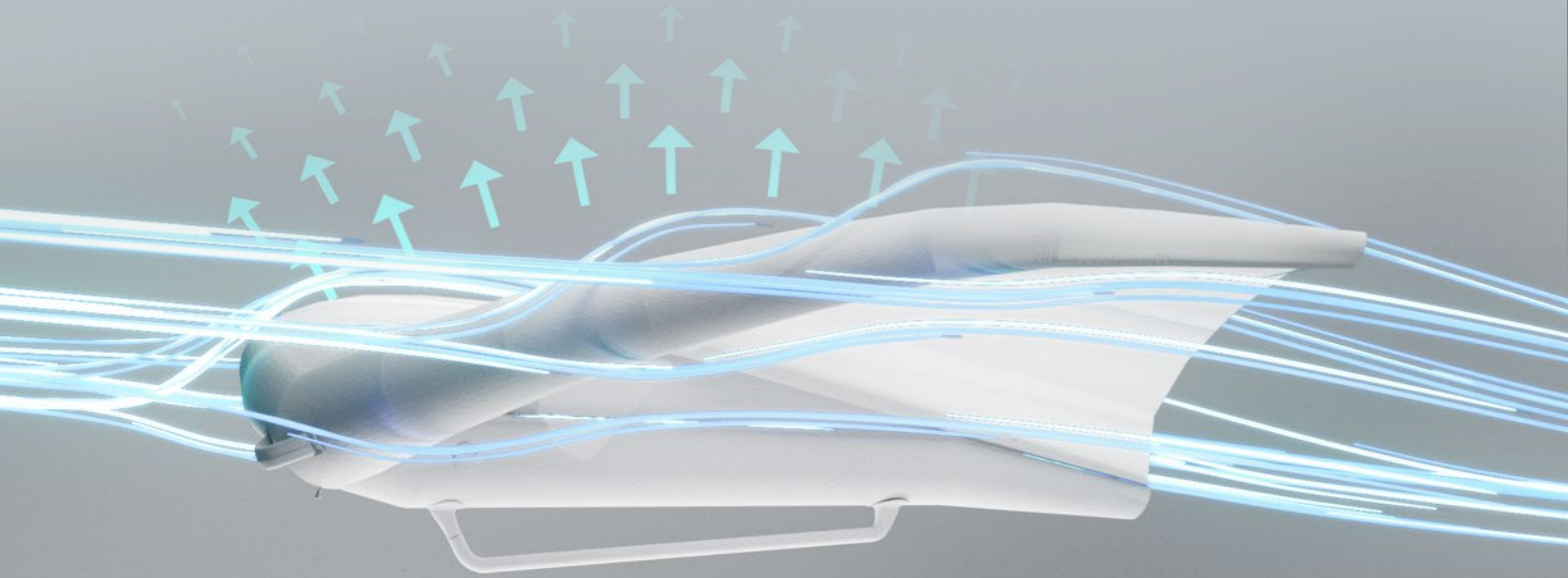
Featured in:  
FLY IV PRO | FLY IV | FIREFLY PRO | FIREFLY | FIREFLY PRO SL



HIGH LIFT CONCEPT

Due to the highly refined LE geometry and entry shaping, each wing produces the maximum thrust (power and acceleration) for its size. This dramatically increases the range, allowing riders to use a smaller wing than is typical in each set of conditions. The result is easier handling and greater maneuverability.

Featured in:  
FLY IV PRO | FLY IV | FIREFLY PRO | FIREFLY | FIREFLY PRO SL



WING WRIST LEASH

Enhance your wingfoiling experience with our versatile Wing Leash. Securely attach the wing to your hand for ultimate freedom and control. Crafted for durability and ease, this leash ensures a worry-free ride, allowing you to focus on your session.

100 cm | 120 cm | 140 cm

NEW ELASTIC WING WRIST LEASH

A durable and stretchable leash that’s less likely to wrap around your handles. Its improved elasticity provides more freedom of movement – available in just two sizes thanks to its flexible design.

105-180cm | 125-225cm

WING HIP LEASH

The Wing Hip Leash combines comfort, safety, and performance in one sleek design. A smooth, double-swivel connection between the neoprene hip belt and the stretchy spiral cord prevents tangling and keeps your setup perfectly streamlined – whether you attach your wing or board leash.

S | M | L

BACKPACK XL

Fits your FireFly Pro SL when folded, with both the longer front Mono Handle and the shorter back handle attached. Bonus: features attachment options for your pump and helmet, plus a front pocket to store your keyss, phone and other smaller items.

Comes with:  
FIREFLY PRO SL



TUBULAR BAG

Fits your wing perfectly – with the Mono Handle attached. Bonus on the Pro model bags: the shoulder strap doubles as a waist leash for your wing.

Comes with:  
FLY IV PRO | FLY IV | FIREFLY PRO | FIREFLY



# FLY IV PRO

3,5 | 4,0 | 4,5 | 5,0 | 5,5 | 6,0 | 6,5

## Unleash Precision

Born from race-wing development, the Fly IV Pro pushes upwind and downwind performance to a new level. With a stiffer, race-inspired frame, it delivers speed, control, and precision in all maneuvers.

## What's New

- » Global redesign with race-inspired LE geometry – both thinner and stiffer
- » Reduced wingspan for balance and easier tricks
- » Increased skin tension and refined lift distribution

TEST  
WINNER

DESIGNER'S INSIGHT

Fly IV Pro points higher, drives faster upwind, and feels locked-in downwind. It's the most advanced wing we've ever built.



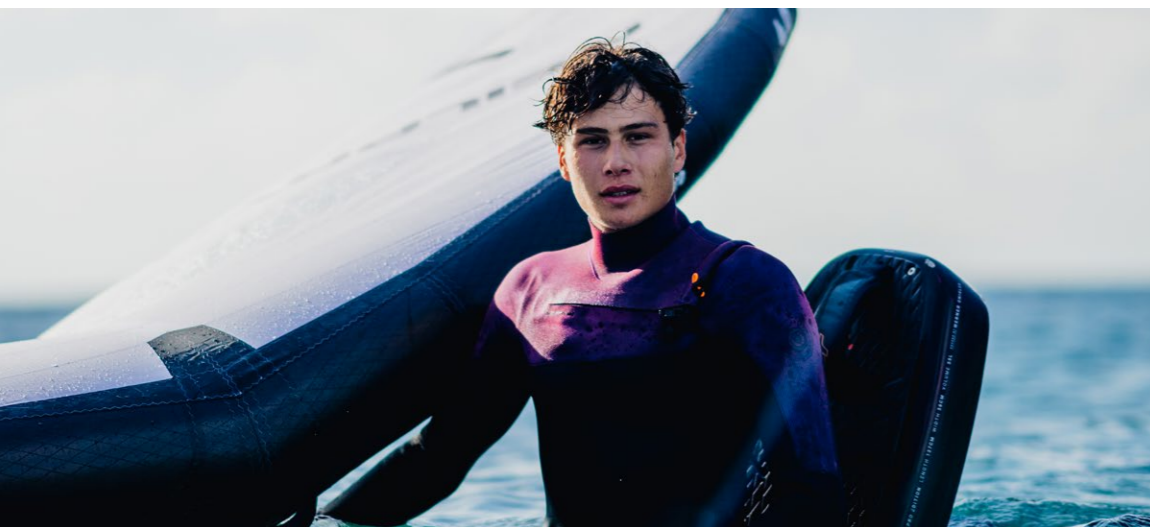
C1



## Key Features & Materials

- » Aluula LE for race-level rigidity and efficiency
- » Optimized camber for balance and speed
- » Unmatched control at high angles of attack
- » Staggered canopy materials
- » Bag: Tubular Bag

[BACK TO THE OVERVIEW »](#)



# FLY IV

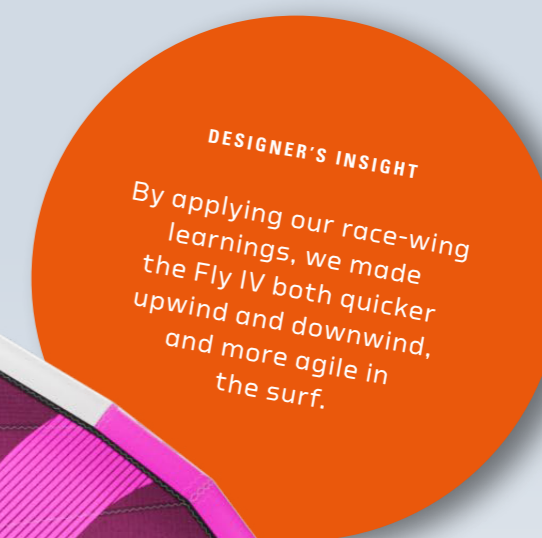
3,5 | 4,0 | 4,5 | 5,0 | 5,5 | 6,0 | 6,5

## High Performance Flight

The Fly IV is a completely re-engineered wing, designed with performance-freeride in mind, the Fly IV reaches a new level of upwind and downwind performance. Faster, more direct, and more compact, it feels sharper and more precise than ever.

## What's New

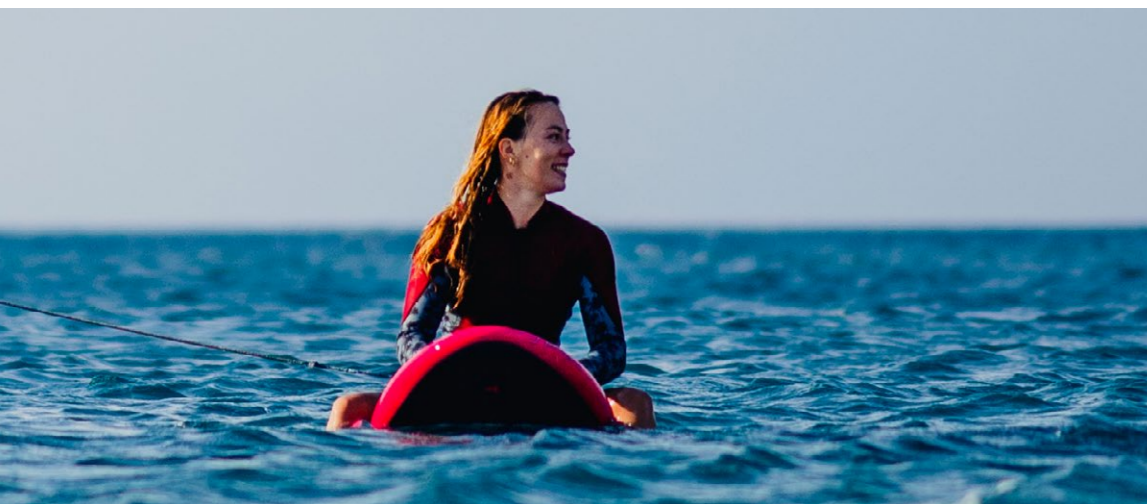
- » New LE geometry for stiffness without extra diameter
- » Shorter wingspan, especially in larger sizes, for easier control
- » Mono handle setup for simple grip and lighter feel
- » Camber now matches Fly IV Pro



## Key Features & Materials

- » Tuned canopy for high stability
- » Compact aspect ratio for better maneuverability
- » Direct and efficient power handling
- » Staggered canopy materials
- » Bag: Tubular Bag

[BACK TO THE OVERVIEW »](#)



# FIREFLY PRO

3,0 | 3,5 | 4,0 | 4,5 | 5,0 | 5,5 | 6,0

## Pro-level Freestyle / Freeride

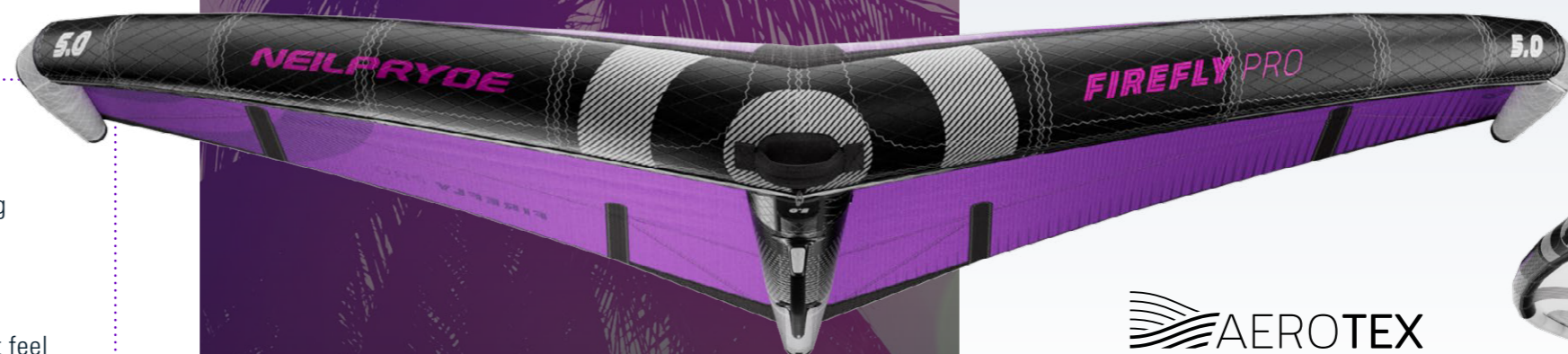
Multi-test winner and clear market leader, the FireFly Pro is the freeride/freestyle/wave wing by which all others are measured. Light, balanced, and responsive, it delivers effortless power for riders looking to push their performance to the max.

## What's New

- » Transition segment on the strut for improved stiffness and pumping response
- » New lightweight wing tip fabric for even more balance
- » Refined Aerotex leading edge construction for durability and direct feel



C1



C3

 AEROTEX

## Key Features & Materials

- » Aerotex LE and Strut for maximum stiffness with low weight
- » Aerotex Lite in the wingtips for ultralight balance
- » Staggered canopy material
- » Optimized canopy tension for acceleration, speed and balance
- » Proven, balanced design that outperforms in all conditions
- » Bag: Tubular Bag

**DESIGNER'S INSIGHT**  
The FireFly Pro already has a magic feel. With small refinements for 2026, it now accelerates better, pumps easier and flies higher. Material and design enhancements have achieved increased durability for this year's model.

**MULTIPLE  
TEST  
WINNER**

Click here or  
view page 11

[BACK TO THE OVERVIEW »](#)

# FIREFLY

2,0 | 2,5 | 3,0 | 3,5 | 4,0 | 4,5 | 5,0 | 5,5 | 6,0

## Freewave

The FireFly is our ultimate go-to freeride wing, blending balanced handling, smooth power delivery, and everyday durability. From first flights to freeride cruising, wave-riding and jumping, it's made to feel natural, light and balanced from the first pump.

## What's New

Refined canopy tension and shape tuning across the size range for crisper response and more efficient pumping.

## Key Features & Materials

- » Durable leading-edge construction
- » Staggered canopy material
- » Stiff transition segment in the strut for better power transfer
- » Smooth, forgiving handling in all conditions
- » Bag: Tubular Bag

## DESIGNER'S INSIGHT

Our goal was to keep the magic feel of the FireFly intact, while giving it a little extra power through the pump and cleaner canopy tension.



C1



C4



C3



[BACK TO THE OVERVIEW »](#)

# FIREFLY PRO SL

6,5 | 7,0 | 7,5

## Ultra-Light, Ultra-Responsive, Get Flying in the Gentlest of Breezes

The FireFly Pro SL takes the proven shape of the FireFly Pro into our 3 biggest wing sizes, stripped down to the lightest, most responsive versions yet. Designed for riders chasing pure efficiency and featherweight handling in the lightest of winds.

### What's New

Exclusive lightweight materials reduce swing weight and maximize pump-to-glide.

### Key Features & Materials

- » Ultra-light construction for unmatched lift and control
- » Same proven FireFly Pro shape, but in a superlight build
- » Minimal swing weight for effortless transitions
- » Bag: Backpack XL



#### DESIGNER'S INSIGHT

By pushing weight savings to the limit, we created the most efficient freeride wing we've ever made.

AEROTEX



[BACK TO THE OVERVIEW »](#)